

SAVOY

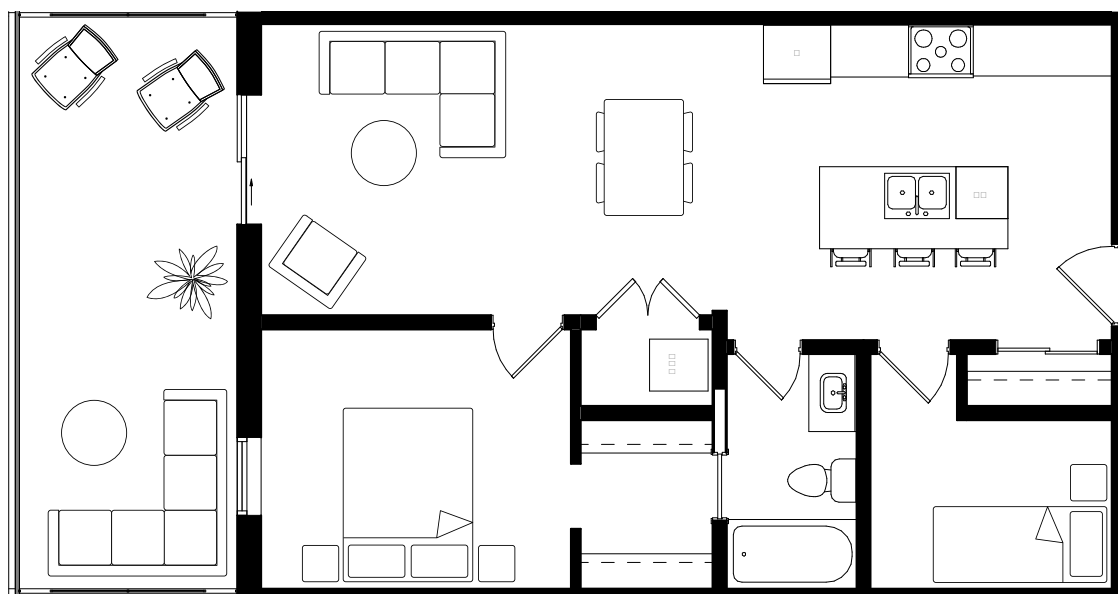
ON CLEMENT

PLAN C1

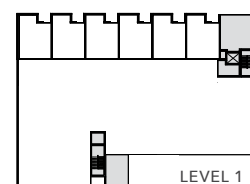
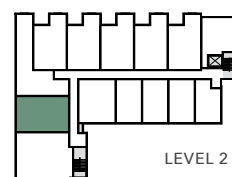
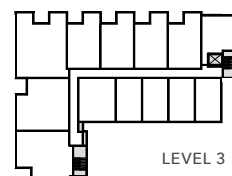
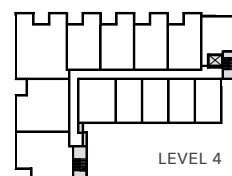
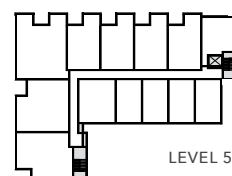
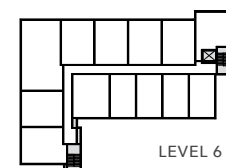
1 BED + DEN | 1 BATH

INTERIOR: 760 SF

EXTERIOR: 191 SF



CLEMENT AVE



LIVESAVOY.CA

☎ 236-338-1638 ✉ information@livesavoy.ca

Presentation Centre: Suite 103 - 810 Clement Ave, Kelowna

SALES AND MARKETING



E. & O. E. This is not an offering for sale. Any such offering may only be made with a Disclosure Statement. The developer reserves the right to modify or change plans, specifications, features, materials and prices without notice and at the developer's sole discretion. While we strive for accuracy, all measurements are approximate and are based on the architectural plans. Renderings are conceptual and are intended as a general reference only.